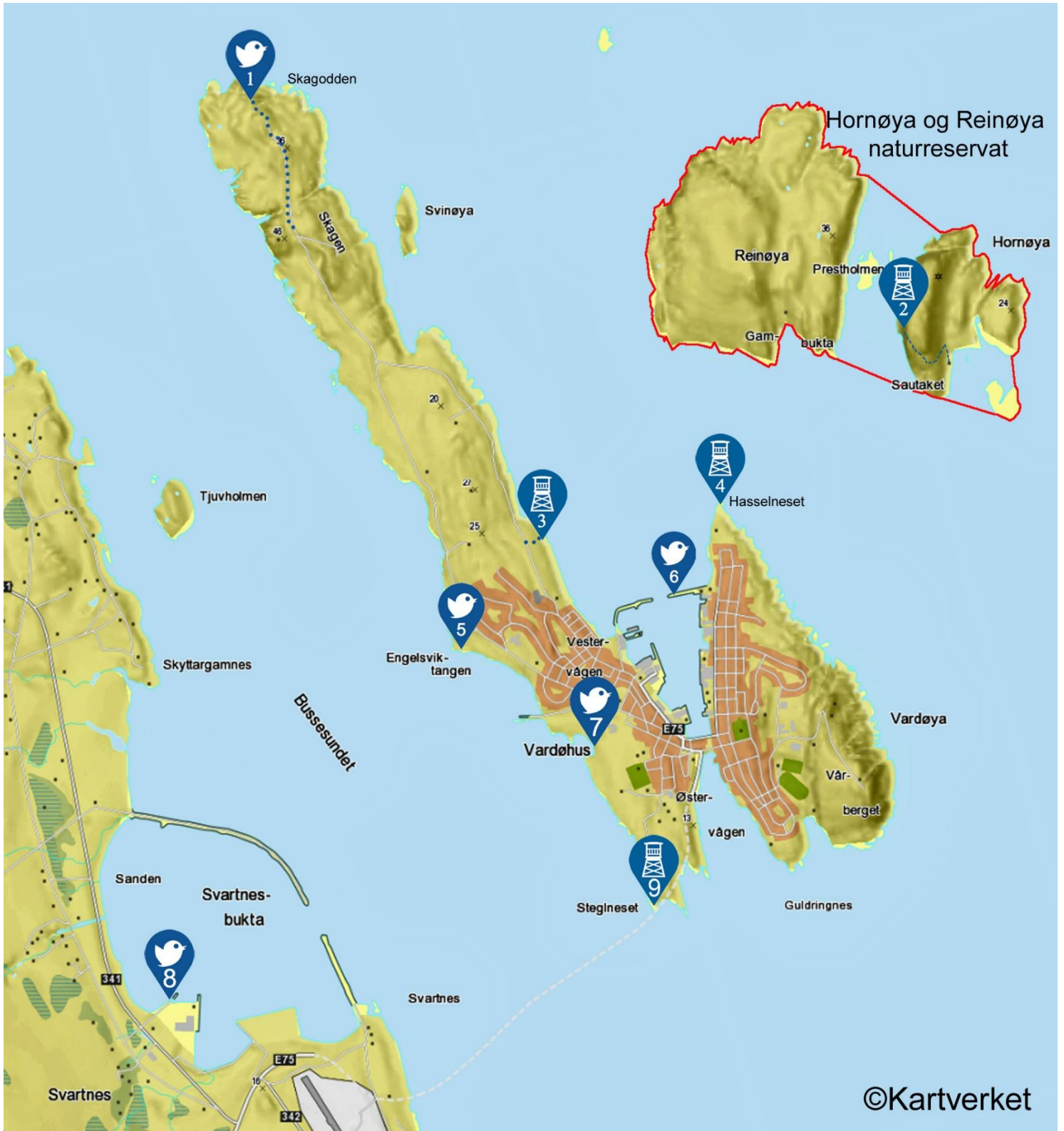


Vardø and Hornøya





Point 1: Skagen and Skagodden

- How to get there?* Tunnel—E75(to the left)—Bødtkergata—Skagen.
From Bødtkergata it's about 2.8km. Skagodden is 1.4km further.
- Walking distance?* 0m.
- Least chance of counterlight* Morning.
- Birds you can hope to find* Passerines, waders, and seabirds.

Point 2: Bird hide in Hornøya

- How to get there?* Boat from Vardø harbour—approx. 10—15min.
- Walking distance?* About 650m. Follow the pathway.
- Least chance of counterlight* Morning.
- Birds you can hope to find* Seabirds.

Point 3: Bird hide by Sandvika

- How to get there?* Tunnel—E75 (to the left)—Kaigata—Skagveien—Gravelroad by the fjord—400m.
- Walking distance?* About 1000m.
- Least chance of counterlight* Morning.
- Birds you can hope to find* Seabirds, ducks, waders, and gulls.

Point 4: Bird hide in Hasselneset

- How to get there?* Tunnel—E75 (to the right)—Kristian 4.gate/Strandgata—Hasselneset
- Walking distance?* 0m.
- Least chance of counterlight* Morning.
- Birds you can hope to find* Seabirds

Point 5: Engelsviktangen

- How to get there?* Tunnel—E75(to the left)—Bødtkergata—Engelsviktangen.
From Bødtkergata it's about 1.2km.
- Walking distance?* 0m.
- Least chance of counterlight* Morning.
- Birds you can hope to find* Waders and ducks.

Point 6: Sandvika / Vardø havn (harbour)

- How to get there?* Tunnel—E75(to the left)—750m.
- Walking distance?* About 150m.
- Least chance of counterlight* Morning.
- Birds you can hope to find* Waders, gulls, and ducks



Point 7: Sunddammen / Vardøhus festning (fortress)

How to get there? Tunnel—E75(to the left)—Bødtkergata—Vardøhus festning (fortress).
From Bødtkergata it's about 250m.

Walking distance? About 250m.

Least chance of counterlight Morning.

Birds you can hope to find Waders and ducks

Point 8: Svartnes

How to get there? To the left before the Tunnel. Parking by the docks.

Walking distance? 0m.

Least chance of counterlight Afternoon.

Birds you can hope to find Gulls, waders, and ducks.

Point 9: Bird hide by Steglneset

How to get there? Tunnel—E75(to the left)—Kongens gate—Skippergata—Egede Nissens gate—
Park by the Chapel.

Walking distance? About 600m. Follow the pathway.

Least chance of counterlight Afternoon.

Birds you can hope to find Gulls, waders, and ducks.